

# JOBS & ECONOMY SNAPSHOT

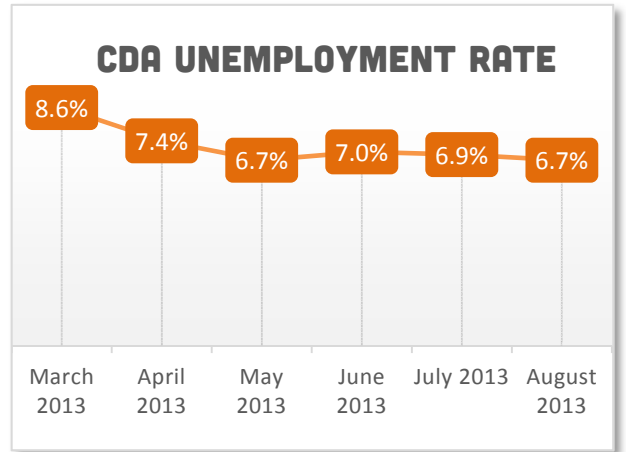


## A vibrant community requires a solid economic foundation

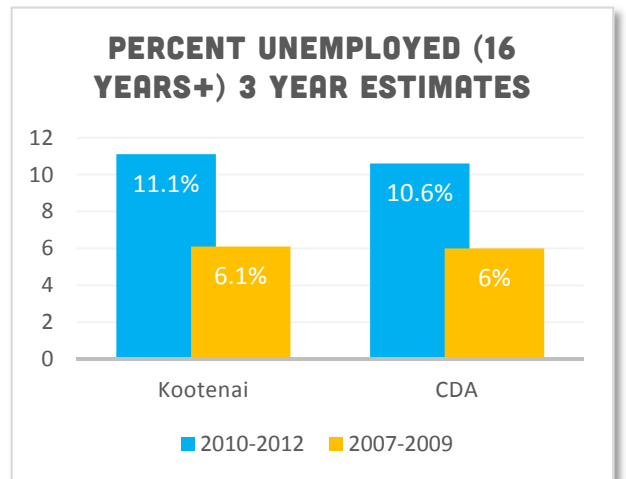
Information in this category spans many views of the county's economy: Total number of jobs, types of jobs, key sectors, and wages at those sectors, overall income levels, revenue from taxes, and the distribution of income.

CDA's unemployment rate is trending down and remains lower than the statewide average at 6.7%. Last year, Idaho's August unemployment rate was 7 percent. The state's jobless rate is at 6.8 percent, and nationally, unemployment fell in August to 7.3 percent. (Idaho Department of Labor).

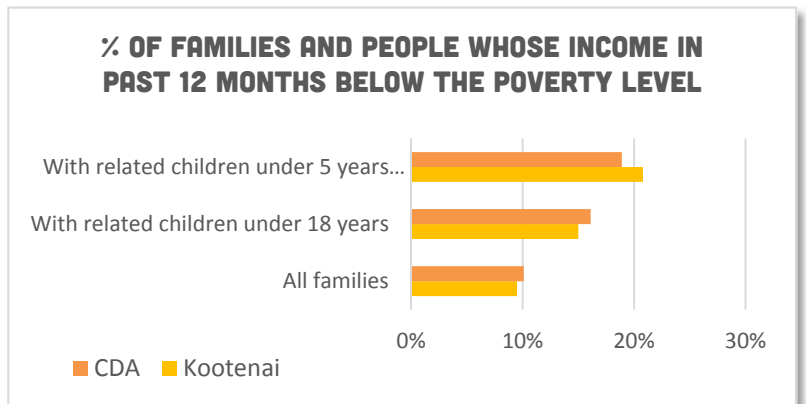
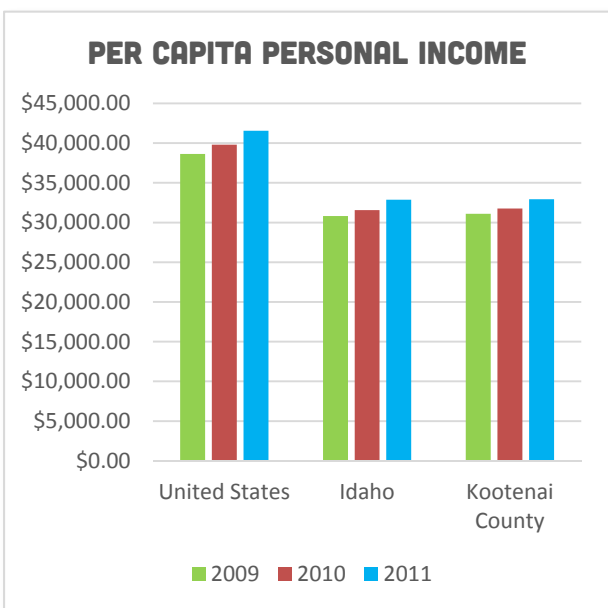
Kootenai County's per capita income, adjusted for inflation was \$33,604 in 2011, compared to \$33,561 in Idaho; decreased 0.7 percent between 2010 and 2011; increased 56.4 percent since 1969 when it was \$20,344; increased 16.7 percent in the 1970s, increased 15.1 percent in the 1980s, increased 23.0 percent in the 1990s, and increased 7.4 percent in the 2000s and, ranked 17th - from highest to lowest - out of the 44 counties in 2011 (Indicators Idaho).



Source: U.S. Bureau of Labor Statistics



Source: ACS Estimates





# JOBS & ECONOMY

## Economic diversification promotes growth

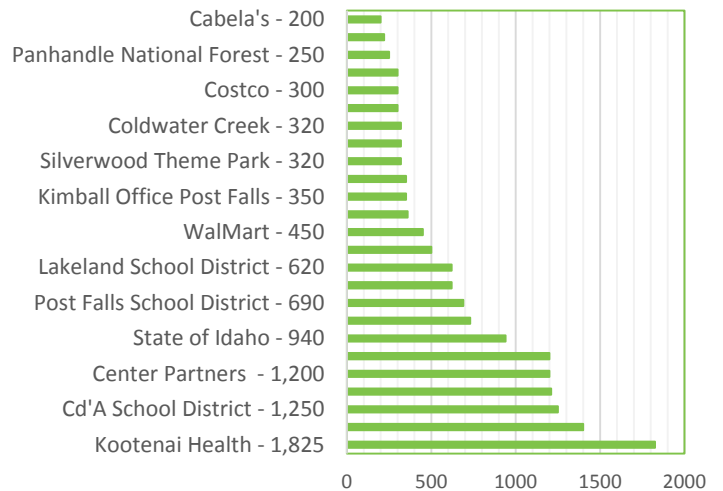
The relocation of many manufacturing operations and six call centers to Kootenai County supported economic growth during the last decade. About 4,000 people work in the county's manufacturing businesses while 2,000 people work at call centers. From 2007 to 2010, the labor force in northern Idaho grew almost 4 percent.

Jobs Plus, the local economic development organization, reported (2012 results), the number of private-sector employers increased 27 percent from 3,788 in 2000 to 4,796 in 2010. And, the number of private-sector employment increased 20 percent from 34,940 in 2000 to 41,958 in 2010.

## Tourism contributes to secure future economy

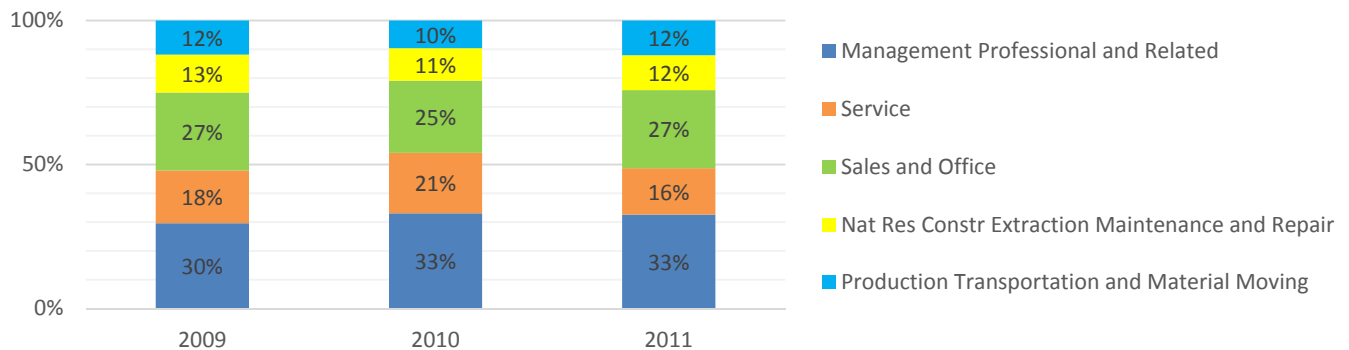
Tourism has continued to grow every year, hitting record levels in 2010. Today, the golf course, hotel, and recently expanded casino employ nearly 1,050 people. In 2010, tourism employment peaked at 7,800. In March 2013, hotel and motel receipts of \$71.8 million were nearly 17 percent ahead of 2012 (Idaho Department of Labor, Kootenai County Work Force Trends).

## GREATER CDA MAJOR EMPLOYERS: 2010

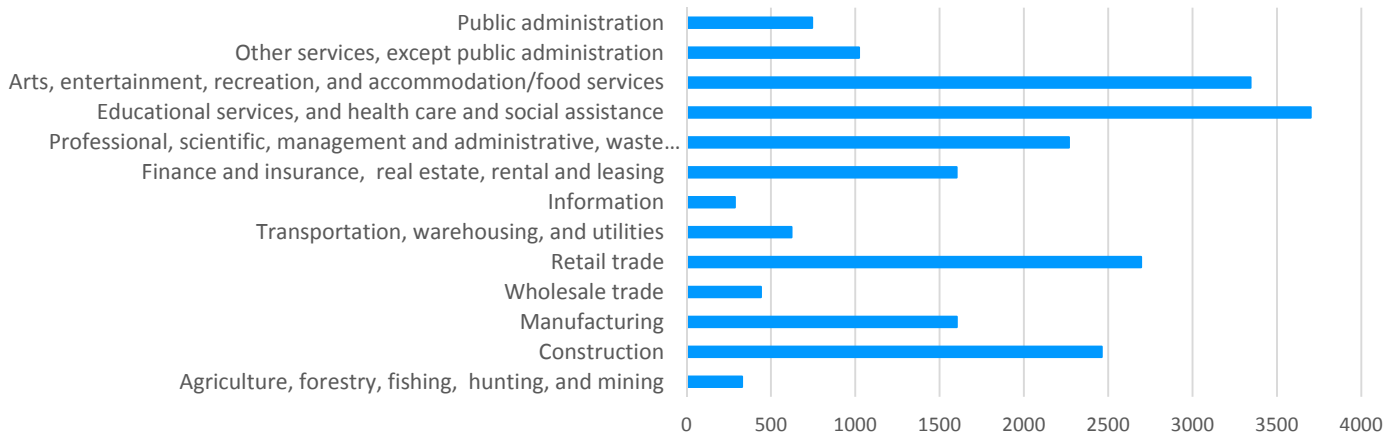


Source: CDA Chamber of Commerce, 2010

## SHARE OF EMPLOYMENT BY OCCUPATION OF POPULATION AGES 16+



## EMPLOYMENT BY INDUSTRY TYPE: 2010



Source: ACS Estimates